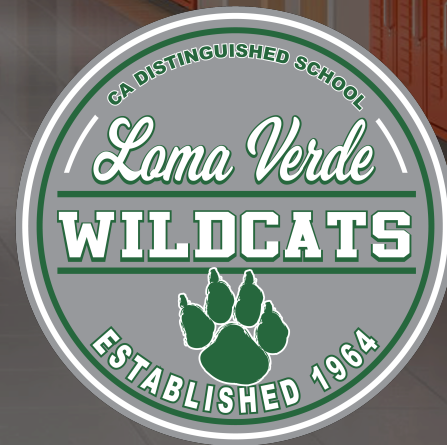
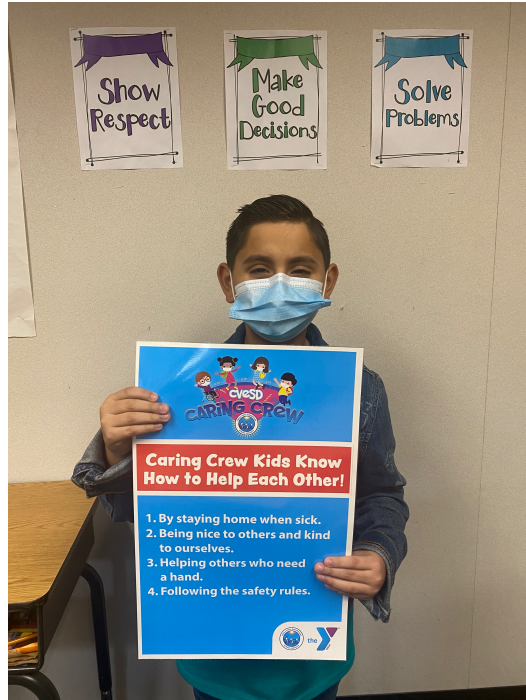


Loma Verde Safe Schools Plan

Coffee Chat

Public Meeting 01-22-2021





Reopening Plans

The Hybrid Model Plan ~ responding to COVID-19

- ❖ CVESD's back-to-school plan is a **hybrid** model because it is a combination of **in-person** classes (Mon.-Thur.) and **at-home** teacher-assigned/teacher-monitored student work (asynchronous instruction) that completes the minimum instructional minutes required by the State during the 2020-2021 schoolyear.
- ❖ CVESD's **Hybrid Model** will go into effect only when conditions in San Diego County reflect no greater than substantial moderate spread (**Red Tier**: 1-3.9% 4.0 – 7.0% rate per 100,000, 2-4.9% 5.3 – 8.0% positive tests as defined by the California Blueprint for a Safer Economy).

The Hybrid Model Plan – Red Tier

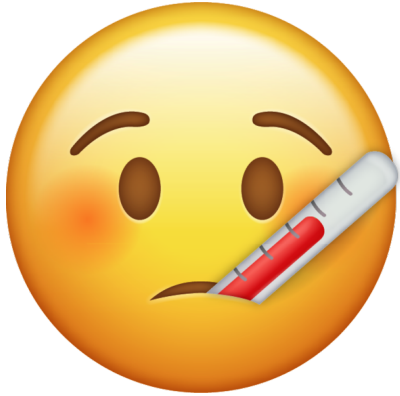
Superintendent will declare us ready to move to the **Hybrid Model**.

There will be a **2-week period** to make necessary adjustments.

Hybrid Teachers would begin working from the school site **5 school days** before students begin attending in person.

Staggered start days may be implemented by grade levels or grade spans in order to ensure a smooth and safe transition to in-person school.

Safety measures will be in place & maintained for and by all (personnel & students). *These include the **Core Four**, cohort groupings, air filtration devices, daily disinfecting classrooms & restrooms between cohorts.*



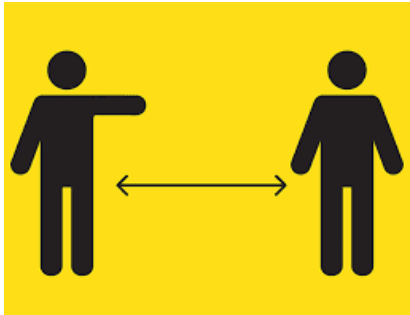
CORE Four

1) Health Screening (daily temp. & symptom review)

2) Mask Wearing (cloth or disposable)

3) Physical Distancing (stay 6ft. away from each other)

4) Hand-Hygiene (frequent hand-washing)



The Hybrid Plan ~continued

Sample **Student Schedule:** In-person class **Mon.-Thur.** on a ½ day school schedule (3 hours) as follows:

* AM Cohort: 8:00-10:45 AM

or

* PM Cohort: 11:45-2:30 PM

Asynchronous work	Kinder: 25m.	1 st -3 rd : 1h. 15m.	4 th -6 th : 1h. 25m.
-------------------	--------------	---	---

Teacher schedule:

7:45-8:00 prep

AM Cohort: 8:00-8:10 arrival, 8:10-10:45 instruction

10:45-11:30 Lunch & Prep

PM Cohort: 11:45-11:55 arrival, 11:55-2:30 instruction

2:30-2:45 Teacher Prep

Fridays: Distance Learning format only (no one on campus)

- 155m. (2h. 35m.) synchronous instruction from home *beginning at 8:00 AM
- *We will determine the “class schedule” per grade span

Asynchronous work	Kinder: 25m.	1 st -3 rd : 1h. 15m.	4 th -6 th : 1h. 25m.
-------------------	--------------	---	---

There will be no recess or eating lunch while on school campus.

Mon-Thurs ~ Teacher Schedule

7:45-8:00	Teacher prep
8:00-8:10	Student Arrival
8:10-10:45	Instruction - AM
10:45-11:45	Lunch & Prep
11:45-11:55	Student Arrival
11:55-2:30	Instruction - PM
2:30-2:45	Teacher Prep



Sample Friday ~ Teacher Schedule

7:45-8:00	Teacher prep
8:00-10:00	synchronous instruction
10:00-10:15	break
10:15-11:15	synchronous instruction
*asynchronous work	
Kinder: 25m	*Grade level collaboration (60M)
1 st -3 rd : 1h. 15m.	*Teacher prep. (70m)
4 th -6 th : 1h. 25m.	*Staff meeting (90m)

It's
FRIDAY!



Dual Language Immersion



1st consideration: **Parent Survey** results
**How many of our students will be returning?*

Combination classes and the re-rostering of classrooms *might impact both **DLI & EO** classes and will impact both **Hybrid** (in-person) and **Distance Learning** classrooms.*

Teacher availability (health) and capability (language) will also impact the number & type of classes available.

The **DI Team** will convene to plan the best possible scenario based on our numbers and time left in the school year.

Ingress (arrival) & Egress (dismissal)

Arrival:

- Entry points will be established by grade level for arriving students.
- Health screening will be conducted at each entry point.
- Parents must wait in their cars for their child to be screened and admitted to school before leaving.
- After screening, students will walk to their classroom – stand on marked spots until invited into the classroom by teachers.



Dismissal:

- Students will be dismissed in small staggered groups.
- Students will be escorted off campus to pick-up and encouraged to stay away from one another while in transit.

HEALTH SCREENING

Have you had close contact with an individual who tested positive for COVID-19 virus?

Are you exhibiting any of the following symptoms?

- Fever of 100° or higher
- Chills
- Cough
- Shortness of breath or difficulty breathing
- Fatigue
- Muscle or body aches
- Headache
- New loss of taste or smell
- Sore throat
- Congestion or runny nose
- Nausea or vomiting
- Diarrhea



If the answer is "YES" to any of these questions, or if you are observed displaying any of these symptoms, you may not enter the facility. If you have questions about when you may return, we will have one of our health office staff members contact you.

Our privacy is important to us. All information pertaining to your health screenings & temperature checks will remain confidential.



- ◆ Do not enter this facility if you have a cough or fever.
- ◆ Wear a face covering.
- ◆ Maintain a minimum six-foot distance from others.
- ◆ Do not shake hands or engage in unnecessary physical contact.

Outdoors & Breaks

~ No traditional lunch or recess times

~ Students may be picking up their lunch on their way off campus. This may be a weekly pick-up.

~ Teachers will be encouraged to use outdoor areas for learning and to provide students with small breaks.

~ Specific restrooms & use times will be assigned to provide for scheduled disinfecting times throughout the day.







CSSP strategies and actions will be implemented prior to reopening in person

Components	Goals	Objectives	Strategies/Action Steps
Place and Environment	Our school embraces the four pillars to prevent the spread of COVID-19 and other viruses	By June 2021, create a school and classroom environment that is conducive to physical distancing requirements.	<ol style="list-style-type: none">1. Distance students and teacher seating 6 feet apart.2. Provide markers for students in lunch areas.3. Hang posters reminding students to keep physical distance.4. Review with students the importance of being a Wildcat and to maintain physical distance, such as ways to greet each other without shaking hands or hugging, games to play on the playground, etc.
Place and Environment	Our school embraces the four pillars to prevent the spread of COVID-19 and other viruses.	By June 2021, the school and classroom will have procedures and supplies to increase disinfecting and hygiene.	<ol style="list-style-type: none">1. Disinfectant and paper towels available in every classroom.2. Poly gloves available in every classroom3. Students taught and reminded to wash their hands for 20 seconds.4. Students notified to use hand sanitizer, only when a sink is not available.5. Hand sanitizer is available in every classroom.6. Shared use spaces, such as lunch tables and bathrooms are disinfected on a regular basis.7. Classrooms are assigned bathroom to use.

CSSP strategies and actions will be implemented prior to reopening in person

Components	Goals	Objectives	Strategies/Action Steps
Place and Environment	Our school embraces the four pillars to prevent the spread of COVID-19 and other viruses	By June 2021, the school will comply with mandates for health screen and contact tracing.	<ol style="list-style-type: none">1. Determine different ways to conduct health screening.2. Implement several options for health screening to meet the needs of staff, parents, and students.3. Conduct daily health screenings, as mandated.4. Develop a sign-in procedure and document system for all staff and necessary visitors on campus in order to assist with contact tracking and contact tracing.
Place and Environment	Our school embraces the four pillars to prevent the spread of COVID-19 and other viruses.	By June 2021, the school will comply with guidelines for Personal Protective Equipment, especially masks.	<ol style="list-style-type: none">1. Masks and face shields will be available in the front office for staff and students who have need of them.2. All classrooms will be provided with Poly gloves for tasks such as helping students with materials and disinfecting.3. Personal Protective Equipment such as N-95 masks, gowns, nitrile gloves, etc. will be available in the front office for those employees who have close contact with students, work with students who cannot wear a mask or have tasks which necessitate wearing of PPEs.4. Signage will be posted around campus reminding students and staff of the requirement to wear a mask.5. Staff and students will take on-line training on how to put on and remove their mask and other PPEs as necessary for their role/job.



Questions & Comments



Thank you!

Please be sure to fill out the
Parent Survey by Monday,
January 25

<https://bit.ly/3iajFLq>